

IBIS[®]

Interline Baggage Information System



IBIS is Logcraft's Interline Baggage Information System. Running on a desktop PC or NT Server and using multiple barcode scanners, the system collects incoming and outgoing interline bag data and delivers end-to-end control and accountability for interline baggage at any airport large or small. IBIS offers interline baggage handlers a powerful tool used for streamlining the handling process, plan resource utilization, trace bags and process billing. IBIS can deliver the transaction data it generates to Airline baggage handling personnel, baggage contractor headquarters and lost baggage agents.

IBIS-Interline Baggage Information Management and Tracking System offers the following functions:

- Scans baggage tags at the baggage loading location with the help of an electronic barcode scanner.
- Allows dialing from the scanner unit to the central database and the transmission of the data generated by the scans.
- Facilitates the extraction of data reflecting baggage scans in the form of reports for management and accounting use.
- Time stamps every scan so that driver activities can be monitored on-line. In order not to have time stamp disagreements between the scanning unit and IBIS, a re-sync logic is activated when the scanner dials IBIS to transfer its information.

The IBIS system records interline baggage handling information as follows:

- Records events for each bag handled by the Interline Baggage contractor,

- Records Flight Arrival and Bag Availability information,
- Records misconnects,

The database provides accurate reports related to interline baggage operations such as:

- Number of Bags Transferred
- Total Bags Misconnect
- Illegal Connects
- Bags Misconnect Within Minimum Connecting Time (MCT)
- Percent Misconnect
- Percent Required In Excess of MCT
- Percent Misconnect Within MCT
- Airline Excess of the MCT
- Reports the bag events of a specific bag tag on a specific day,

IBIS is designed to improve greatly on accuracy, eliminate double entries of data, and most important it delivers accurate and timely reports indicative of baggage operations. It replaces manual intensive and costly operations related to the recording of baggage transfers.

IBIS - Scanning Module

IBIS barcode scanners are configured to scan most types of bag tags. A typical bag tag contains a 10-digit barcode which indicates the inbound carrier and the carrier's unique ID for the bag.

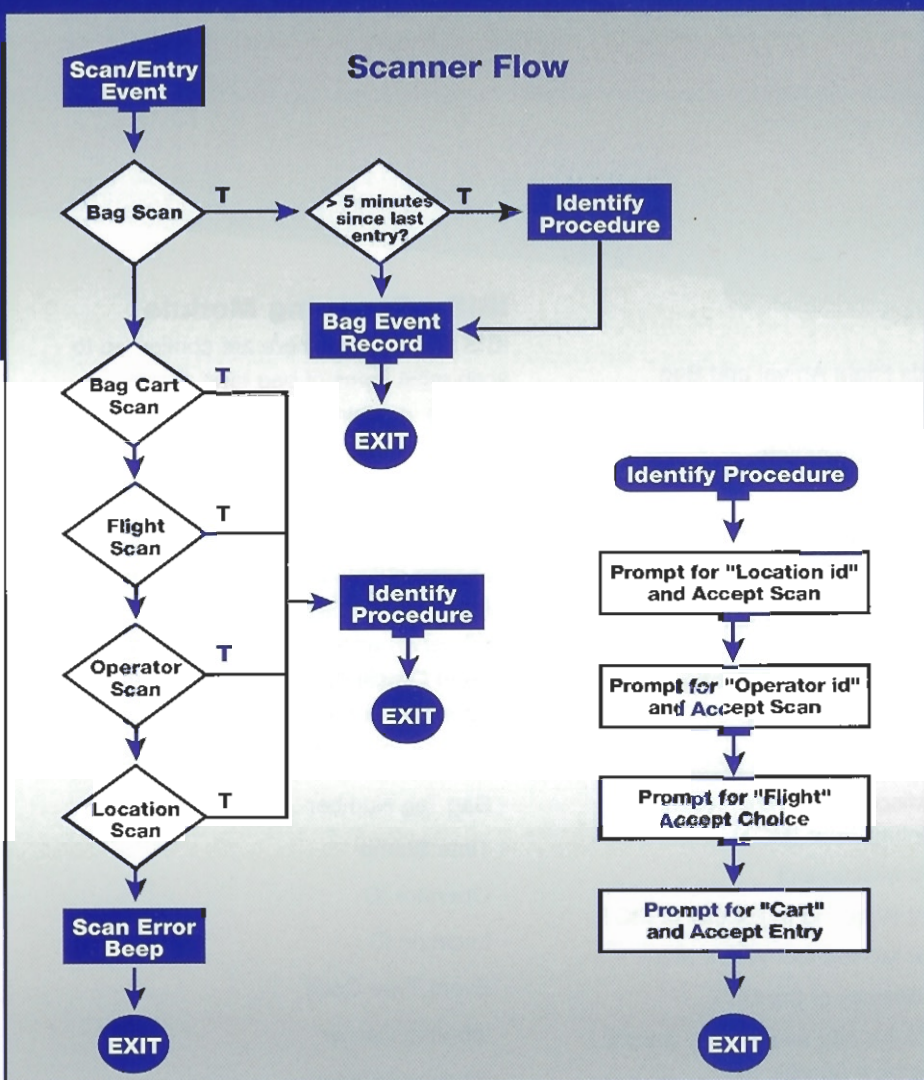
The portable scanner device captures baggage events at the various airline terminal locations and transmits them to the IBIS server application that writes them into an Oracle database. These bag events have one entry per bag-event using the following data structure:

- Bag Tag Number
- Time Stamp
- Operator ID
- Location ID
- Event Type Code
- Inbound Carrier
- Inbound Flight #

Each time the scanner is placed in its cradle a bi-directional transfer of information occurs between the IBIS database and the scanner unit.

IBIS uses an scan recognition technology allowing the unit to differentiate bag tags from operator badges, cart tags, flight-number tags and location tags. Manual entry and overrides are also permitted.





Received date	Bag Tag Number	Card Number	Action	Description
07/31/2000	850000	AP		Airline Pickup
07/31/2000	860000012	IP		Interline Pickup
07/31/2000	860000013	IP		Interline Pickup
07/31/2000	860000012	ID		Interline Dropoff
07/31/2000	8504	IP		Interline Pickup
07/31/2000	8504	IP		Interline Pickup
07/31/2000	87872	ID		Interline Dropoff

Airline	Bag Tag Number	Card Number	Location	Action	Time
YYY	000000403	403	P21	Action Pnk-Up	7000000-03:40:00 PM
YYY	000000403	403	P21	Action Pnk-Up	7000000-03:50:00 PM
YYY	000000403	403	P21	Action Pnk-Up	7000000-03:52:00 PM
YYY	000000403	403	P21	Action Pnk-Up	7000000-03:53:00 PM
YYY	000000403	403	P21	Action Pnk-Up	7000000-03:54:00 PM
American Airlines	0001149100	403	P21	Action Pnk-Up	7000000-03:54:00 PM
American Airlines	0001149100	403	P21	Action Pnk-Up	7000000-03:55:00 PM
American Airlines	0001149100	403	P21	Action Pnk-Up	7000000-03:56:00 PM
American Airlines	0001149100	403	P21	Action Pnk-Up	7000000-03:57:00 PM
American Airlines	0001149100	403	P21	Action Pnk-Up	7000000-03:58:00 PM
American Airlines	0001149100	403	P21	Action Pnk-Up	7000000-03:59:00 PM
American Airlines	0001149100	403	P21	Action Pnk-Up	7000000-04:00:00 PM
American Airlines	0001149100	403	P21	Action Pnk-Up	7000000-04:01:00 PM
American Airlines	0001149100	403	P21	Action Pnk-Up	7000000-04:02:00 PM
American Airlines	0001149100	403	P21	Action Pnk-Up	7000000-04:03:00 PM
American Airlines	0001149100	403	P21	Action Pnk-Up	7000000-04:04:00 PM
American Airlines	0001149100	403	P21	Action Pnk-Up	7000000-04:05:00 PM
American Airlines	0001149100	403	P21	Action Pnk-Up	7000000-04:06:00 PM
American Airlines	0001149100	403	P21	Action Pnk-Up	7000000-04:07:00 PM
American Airlines	0001149100	403	P21	Action Pnk-Up	7000000-04:08:00 PM
American Airlines	0001149100	403	P21	Action Pnk-Up	7000000-04:09:00 PM
American Airlines	0001149100	403	P21	Action Pnk-Up	7000000-04:10:00 PM
American Airlines	0001149100	403	P21	Action Pnk-Up	7000000-04:11:00 PM
American Airlines	0001149100	403	P21	Action Pnk-Up	7000000-04:12:00 PM
American Airlines	0001149100	403	P21	Action Pnk-Up	7000000-04:13:00 PM
American Airlines	0001149100	403	P21	Action Pnk-Up	7000000-04:14:00 PM
American Airlines	0001149100	403	P21	Action Pnk-Up	7000000-04:15:00 PM
American Airlines	0001149100	403	P21	Action Pnk-Up	7000000-04:16:00 PM
American Airlines	0001149100	403	P21	Action Pnk-Up	7000000-04:17:00 PM
American Airlines	0001149100	403	P21	Action Pnk-Up	7000000-04:18:00 PM
American Airlines	0001149100	403	P21	Action Pnk-Up	7000000-04:19:00 PM
American Airlines	0001149100	403	P21	Action Pnk-Up	7000000-04:20:00 PM

IBIS Benefits

Interline Baggage is an essential service in the airline chain of customer satisfaction activities. In addition, there is a serious need to automate baggage handling operations that generate necessary data for improving the quality of baggage services and in the process lowering cost of operations.

IBIS delivers a key element in improving airline customer service and airport baggage handling operations.

Reports

All reports display a parameter selection form as shown below:

IBIS Management Reports:

IBIS enables its users to generate a variety of management and operational reports necessary to trace bags, crew performance, assess work load, plan resources and bill customers as follows:

- Bag Trace Report
- Bag Tag Exception Report

- Interline Availability Report
- Consolidated Misconnect Report
- Flight Availability Summary
- Monthly Billable Transfers
- Monthly Misconnects
- Monthly Misconnect Matrix
- Airline Bags Quantity Report

IBIS Technology:

IBIS was designed around a scalable system architecture and is accessible by users anywhere in an airport. The Oracle database resides on an NT server and can be distributed with a wan, lan or cluster technologies. The communications server, which handles data exchange with the scanners, can co-reside on the database server

or reside on it's set of servers. These technologies make IBIS a highly scalable solution - from a single computer or LAN to a fully distributed WAN.

The barcode scanners used with IBIS are capable of withstanding adverse conditions at most airports in the world and are ruggedized to survive rough handling.

Logicraft Delivers

Logicraft is a leading aviation systems house that specializes in the development and implementation of airport logistics management software systems. As such we support our aviation customers from the inception of a project until and after its successful completion.

Feasibility studies, site surveys, system design, software development, hardware/software integration, installation and adaptation, customization, training, maintenance and technical support are part of our ordinary services to all our aviation customers.

For additional information please contact our sales and marketing department



Logicraft Corporation

JFK International Airport - P.O. Box 300624 - Jamaica, NY 11430

PH: (718) 632-0100 FAX: (718) 632-2750

E-MAIL: marketing@logicraft.net WEB: www.logicraft.net